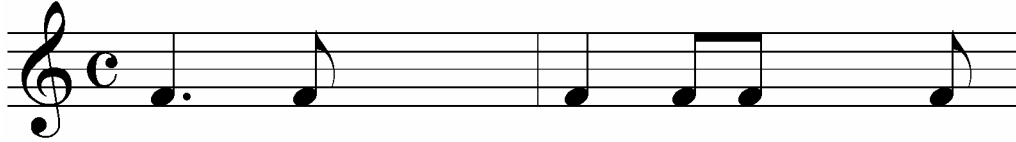
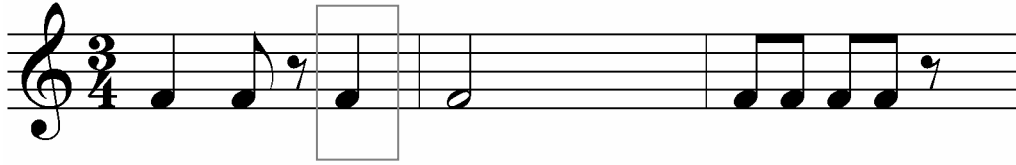


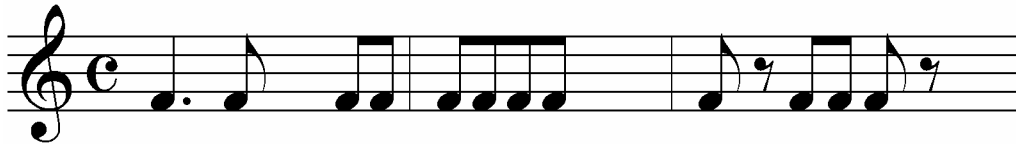
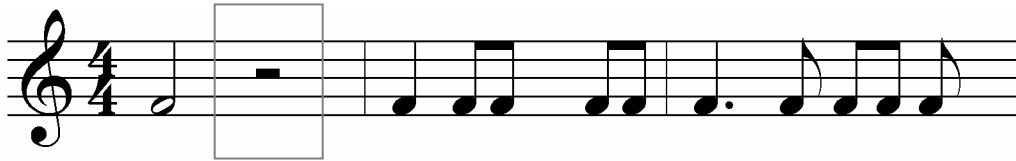


RHYTHM REVIEW

2. Add one note to complete each measure.

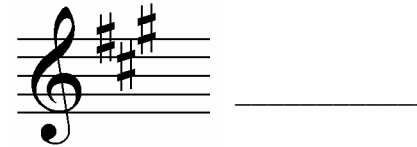


3. Add one rest to complete each measure.

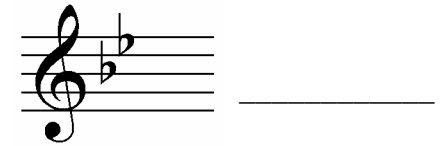


INTRODUCTION TO KEY SIGNATURES REVIEW

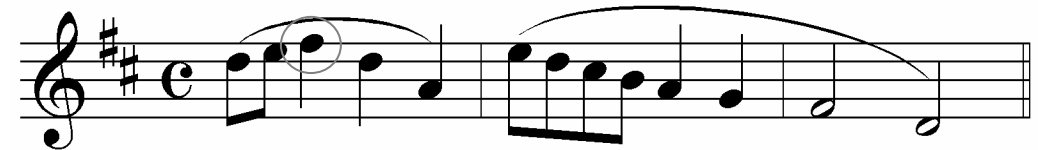
1. Identify the sharps in each key signature.



2. Identify the flats in each key signature.



3. For each passage, circle any notes that are affected by the key signature.





MORE REPEAT SIGNS

1. Draw lines connecting each repeat symbol/term to its correct name or definition.

⌘	first ending
<i>D.C.</i>	coda
⊕	end
<i>al Fine</i>	del segno (from the sign)
<i>D.S.</i>	sing through to the coda
1.	second ending
2.	segno (sign)
<i>Fine</i>	da capo (from the beginning)
<i>al Coda</i>	sing through to the end



SEMITONES, WHOLE TONES AND ENHARMONIC NOTES REVIEW

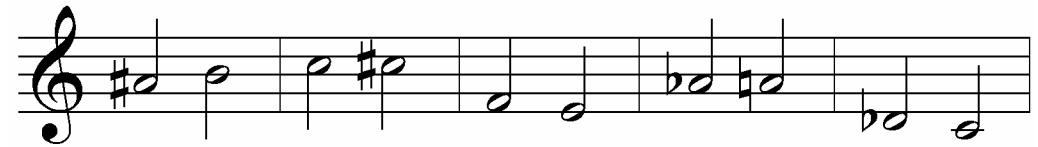
- a) Explain what a diatonic semitone is. _____

b) Explain what a chromatic semitone is. _____

c) Explain what an enharmonic note is. _____

d) Explain what a whole tone is. _____

2. Label each pair of notes as a diatonic semitone (DS) or chromatic semitone (CS).



DS

3. Label each pair of notes as a whole tone (WT) or enharmonic note (EN).



WT